



## P3/4 - What will we be learning this term?



### Literacy

In Literacy this term, we will: -

Continue to build on spelling patterns. In writing, we will be focussing on self-editing our work. We will also focus on explanation, instruction and persuasive writing and will continue to develop our range of vocabulary.

In listening and talking, pupils will be learning to make simple notes to summarise what they have watched or listened to.

In reading, pupils will continue to focus on developing fluency, expression and comprehension. We will also be concentrating on developing children's understanding of using contents, index and glossary pages.



### Numeracy and Maths

In Maths & Numeracy this term we will focus on data handling. Pupils will learn how to read a variety of graphs and tables, as well as creating their own.

We will investigate fractions. We will compare and order simple fractions using a number line and learn about equivalent fractions.

Another maths focus will be problem solving, where the children will learn to select the correct method e.g add, subtract, multiply or divide in order to complete a word problem.

We will also continue to learn all times tables, developing an understanding of the link between multiplication and division.



### Health and Wellbeing



In Health and Wellbeing, we will be continuing to work on our Building Resilience programme. This term will be '**Respect Yourself**'. This has been introduced to the children through an assembly and will be followed up with classroom-based activities.

In class, we will be looking at the RSHP programme at first level and covering some of the topics including: -

Everyone is unique, but we have similarities and differences and disability. Information on this programme can be found at

[www.rshp.scot/first/](http://www.rshp.scot/first/)

In Gym, pupils will work with our PE specialist, Mr Devine. Their focus will be **Athletics**.

### Science

This Term we will be developing our scientific skills and knowledge as we investigate the following areas:

- Energy
- Forces
- Magnets
- Electrical circuits
- Sound



Also this term, we will be completing all 6 activities to achieve the **RSPB 'Wild Challenge Award'**.



## *Expressive Arts*

Primary 3/4 are super excited this term as they will be preparing for a performance called 'How The Dragon Was Made'.

**In Music** they will be working towards learning the songs for our end of year show called 'How The Dragon Was Made'.

**In Drama** they will participate in different activities relating to their show.

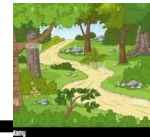
**In Art** this term we will create art; inspired by our experiences at Forest Schools.



## *Forest Schools*

We are all very excited about Forest Schools this term. These sessions will help to support your child in play, exploration and risk taking. So far there is interest in-

- solving a building challenge
- learning the names of different plants and bugs
- making a fire and toasting
- marshmallows/making smores
- treasure hunting
- climbing trees
- playing hide and seek
- discovering how old trees are
- seeing different animals
- finding evidence of early people



## *Ethos and Wider Life of the School*

Pupils continue to select two Pupils of the Week. Nominations from pupils are based on how well pupils have been able to demonstrate the school values of kindness, inclusion, responsibility and respect.



### *Planned opportunities for wider achievement.*

- Pupil of the Week
- After School Clubs
- Master Classes

### *Dates for your diary and reminders.*

- **Gym** is on a **Wednesday** and **Thursday** with our gym specialist Mr Devine. Can you ensure that your child has a **gym kit** in school on these days. Children should have a change of **t-shirt, a pair of shorts/joggers and indoor gym shoes.**
- **Tuesday 23<sup>rd</sup> April – Tuesday 4<sup>th</sup> June** - Forest school (Tuesday 7<sup>th</sup> May Inservice Day - no forest schools)
- **Monday 6<sup>th</sup> & Tuesday 7<sup>th</sup> May** - May Day holiday
- **Monday 20<sup>th</sup> May** - Victoria Day holiday (school closed)
- **Tuesday 21<sup>st</sup> May** – Bee Company Visit
- **Wednesday 6<sup>th</sup> June** - Sports Day
- **June** – End of term trip. More details to follow.
- **June** – 'How The Dragon Was Made' performance - date to follow.
- **Friday 28<sup>th</sup> June** - Term ends for summer holiday. (school closed at 1pm)

